

Acta Crystallographica Section E

## Structure Reports

Online

ISSN 1600-5368

1,7,8,9,10,10-Hexachloro-4-(thiophen-2-ylmethyl)-4-azatricyclo[5.2.1.0<sup>2,6</sup>]dec-8-ene-3,5-dioneR. Manohar,<sup>a</sup> M. Harikrishna,<sup>b</sup> C. R. Ramanathan,<sup>b</sup>  
M. SureshKumar<sup>c</sup> and K. Gunasekaran<sup>a\*</sup><sup>a</sup>CAS in Crystallography and Biophysics, University of Madras, Guindy Campus, Chennai 600025, India, <sup>b</sup>Department of Chemistry, Pondicherry University, Pondicherry 605014, India, and <sup>c</sup>Centre for Bioinformatics, Pondicherry University, Pondicherry 605014, India

Correspondence e-mail: gunaunom@gmail.com

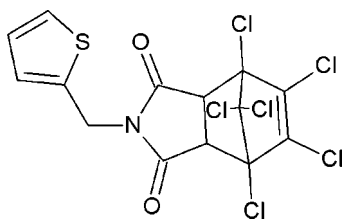
Received 21 July 2011; accepted 12 August 2011

Key indicators: single-crystal X-ray study;  $T = 293$  K; mean  $\sigma(\text{C}-\text{C}) = 0.003$  Å;  $R$  factor = 0.037;  $wR$  factor = 0.075; data-to-parameter ratio = 19.2.

In the title compound,  $\text{C}_{14}\text{H}_7\text{Cl}_6\text{NO}_2\text{S}$ , the six-membered ring of the azatricyclo system has a boat conformation whereas the five-membered rings have an envelope conformation. The thiophene ring and the ring of the succinimide moiety enclose a dihedral angle of  $67.2(1)^\circ$ . The crystal packing is stabilized by weak intermolecular  $\text{C}-\text{H}\cdots\text{O}$  hydrogen bonds.

## Related literature

For the biological activity of cyclic imides, see: Duarte *et al.* (2006); Nakamura *et al.* (2006); Stefańska *et al.* (2010).



## Experimental

## Crystal data

 $\text{C}_{14}\text{H}_7\text{Cl}_6\text{NO}_2\text{S}$   
 $M_r = 465.97$ 

 Tetragonal,  $I4_1/a$   
 $a = 23.8136(10)$  Å

 $c = 12.6240(9)$  Å  
 $V = 7158.9(7)$  Å<sup>3</sup>  
 $Z = 16$   
 Mo  $K\alpha$  radiation

 $\mu = 1.08$  mm<sup>-1</sup>  
 $T = 293$  K  
 $0.20 \times 0.20 \times 0.20$  mm **Is this OK?**

## Data collection

 Xcalibur, Eos diffractometer  
 Absorption correction: multi-scan  
 (*CrysAlis PRO*; Oxford  
 Diffraction, 2010)  
 $T_{\min} = 0.978$ ,  $T_{\max} = 0.984$ 

 8488 measured reflections  
 4156 independent reflections  
 2283 reflections with  $I > 2\sigma(I)$   
 $R_{\text{int}} = 0.032$ 

## Refinement

 $R[F^2 > 2\sigma(F^2)] = 0.037$   
 $wR(F^2) = 0.075$   
 $S = 0.82$   
 4156 reflections

 217 parameters  
 H-atom parameters constrained  
 $\Delta\rho_{\text{max}} = 0.31$  e Å<sup>-3</sup>  
 $\Delta\rho_{\text{min}} = -0.31$  e Å<sup>-3</sup>

Table 1

Hydrogen-bond geometry (Å, °).

$D-H\cdots A$	$D-H$	$H\cdots A$	$D\cdots A$	$D-H\cdots A$
$\text{C}2-\text{H}2\cdots\text{O}2^i$	0.98	2.54	3.064 (3)	113
$\text{C}6-\text{H}6\cdots\text{O}2^i$	0.98	2.51	3.042 (3)	114

Symmetry code: (i)  $y - \frac{1}{2}, -x + \frac{3}{2}, z - \frac{1}{2}$ .

Data collection: *CrysAlis PRO* (Oxford Diffraction, 2010); cell refinement: *CrysAlis PRO*; data reduction: *CrysAlis PRO*; program(s) used to solve structure: *SHELXS97* (Sheldrick, 2008); program(s) used to refine structure: *SHELXL97* (Sheldrick, 2008); molecular graphics: *ORTEP-3* (Farrugia, 1997); software used to prepare material for publication: *SHELXL97* and *PLATON* (Spek, 2009).

CRR is grateful to the DST-FIST single-crystal X-ray facility of the Department of Chemistry, Pondicherry University, Pondicherry.

Supplementary data and figures for this paper are available from the IUCr electronic archives (Reference: BT5586).

## References

- Duarte, F. S., Andrade, E. S., Vieira, R. A., Uieara, M., de Nunes, R. J. & Lima, T. C. M. (2006). *Bioorg. Med. Chem.* **14**, 5397–5401.  
 Farrugia, L. J. (1997). *J. Appl. Cryst.* **30**, 565.  
 Nakamura, T., Noguchi, T., Kobayashi, H., Miyachi, H. & Hashimoto, Y. (2006). *Chem. Pharm. Bull.* **54**, 1709–1714.  
 Oxford Diffraction (2010). *CrysAlis PRO*. Oxford Diffraction Ltd, Yarnton, England.  
 Sheldrick, G. M. (2008). *Acta Cryst.* **A64**, 112–122.  
 Spek, A. L. (2009). *Acta Cryst.* **D65**, 148–155.  
 Stefańska, J., Bielenica, A., Struga, M., Tyski, S., Kossakowski, J., Colla, P. L., Tamburini, E. & Loddo, R. (2010). *Ann. Microbiol.* **60**, 151–155.

**supplementary materials**

*Acta Cryst.* (2011). E67, o2391 [ doi:10.1107/S1600536811032788 ]

## 1,7,8,9,10,10-Hexachloro-4-(thiophen-2-ylmethyl)-4-azatricyclo[5.2.1.0<sup>2,6</sup>]dec-8-ene-3,5-dione

R. Manohar, M. Harikrishna, C. R. Ramanathan, M. SureshKumar and K. Gunasekaran

### Comment

Azatricyclo dec-8-ene 3,5 dione derivatives have anti bacterial and anti fungal activities with other important biological activities (Stefańska *et al.*, 2010).

In these structure, the six-membered ring of the norbornene moiety adopts a boat conformation whereas the two five-membered rings adopt envelope conformation. The fusion at atoms C6 and C2 is in *cis* conformation. The planarity around N4 and C3—N4 [1.38 (4) Å] and N4—C5 [1.38 (4) Å] reveals the partial double bond character to facilitate the electron delocalization from one keto oxygen to other through N4. The crystal structure is stabilized by weak inter-molecular C—H···O interactions.

### Experimental

1-(thiophen-2-yl)methanamine (1 equiv) and 1,4,5,6,7,7-hexachloro-5-norbornene-2,3-dicarboxylic anhydride (1 equiv) were stirred at room temperature in dry ethyl acetate for 30 min. Ethyl acetate was removed under reduced pressure; the resulting residue was dissolved in toluene. To this reaction mixture was added acetyl chloride (5 equiv) and refluxed for 1 h. The reaction mixture was brought to room temperature and washed with aqueous Na<sub>2</sub>CO<sub>3</sub> and dried over anhydrous Na<sub>2</sub>SO<sub>4</sub>. Filtered and concentrated under reduced pressure followed by silica gel column purification afforded the imide, 1,7,8,9,10,10-Hexachloro-4-(thiophen-2-yl-methyl)-4-azatricyclo[5.2.1.0<sup>2,6</sup>]dec-8-ene-3,5-dione, in 92% yield as colorless solid.

### Refinement

The hydrogen atoms were positioned geometrically and refined using a riding model.

### Figures

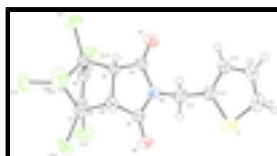


Fig. 1. The *ORTEP* diagram of the compound with 30% probability displacement ellipsoids.

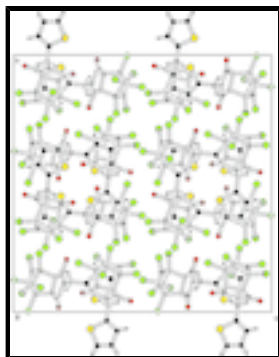


Fig. 2. Packing diagram.

**1,7,8,9,10,10-Hexachloro-4-(thiophen-2-ylmethyl)-4-azatricyclo[5.2.1.0<sup>2,6</sup>]dec-8-ene-3,5-dione**

*Crystal data*

C<sub>14</sub>H<sub>7</sub>Cl<sub>6</sub>NO<sub>2</sub>S

*M<sub>r</sub>* = 465.97

Tetragonal, *I*4<sub>1</sub>/*a*

Hall symbol: -I 4ad

*a* = 23.8136 (10) Å

*c* = 12.6240 (9) Å

*V* = 7158.9 (7) Å<sup>3</sup>

*Z* = 16

*F*(000) = 3712

*D<sub>x</sub>* = 1.729 Mg m<sup>-3</sup>

Mo *K*α radiation, λ = 0.71073 Å

μ = 1.08 mm<sup>-1</sup>

*T* = 293 K

Tetragonal, colourless

0.20 × 0.20 × 0.20 mm

*Data collection*

Oxford Diffraction Xcalibur Eos diffractometer

Radiation source: fine-focus sealed tube graphite

Detector resolution: 15.9821 pixels mm<sup>-1</sup>

ω scans

Absorption correction: multi-scan (*CrysAlis PRO*; Oxford Diffraction, 2010)

*T<sub>min</sub>* = 0.978, *T<sub>max</sub>* = 0.984

8488 measured reflections

4156 independent reflections

2283 reflections with *I* > 2σ(*I*)

*R<sub>int</sub>* = 0.032

θ<sub>max</sub> = 29.2°, θ<sub>min</sub> = 3.0°

*h* = -29 → 16

*k* = -28 → 32

*l* = -15 → 17

*Refinement*

Refinement on *F*<sup>2</sup>

Least-squares matrix: full

*R*[*F*<sup>2</sup> > 2σ(*F*<sup>2</sup>)] = 0.037

*wR*(*F*<sup>2</sup>) = 0.075

*S* = 0.82

Primary atom site location: structure-invariant direct methods

Secondary atom site location: difference Fourier map

Hydrogen site location: inferred from neighbouring sites

H-atom parameters constrained

*w* = 1/[σ<sup>2</sup>(*F<sub>o</sub>*<sup>2</sup>) + (0.0329*P*)<sup>2</sup>]

where *P* = (*F<sub>o</sub>*<sup>2</sup> + 2*F<sub>c</sub>*<sup>2</sup>)/3

4156 reflections	$(\Delta/\sigma)_{\max} = 0.001$
217 parameters	$\Delta\rho_{\max} = 0.31 \text{ e } \text{\AA}^{-3}$
0 restraints	$\Delta\rho_{\min} = -0.31 \text{ e } \text{\AA}^{-3}$

*Special details*

**Geometry.** All e.s.d.'s (except the e.s.d. in the dihedral angle between two l.s. planes) are estimated using the full covariance matrix. The cell e.s.d.'s are taken into account individually in the estimation of e.s.d.'s in distances, angles and torsion angles; correlations between e.s.d.'s in cell parameters are only used when they are defined by crystal symmetry. An approximate (isotropic) treatment of cell e.s.d.'s is used for estimating e.s.d.'s involving l.s. planes.

**Refinement.** Refinement of  $F^2$  against ALL reflections. The weighted  $R$ -factor  $wR$  and goodness of fit  $S$  are based on  $F^2$ , conventional  $R$ -factors  $R$  are based on  $F$ , with  $F$  set to zero for negative  $F^2$ . The threshold expression of  $F^2 > \sigma(F^2)$  is used only for calculating  $R$ -factors(gt) *etc.* and is not relevant to the choice of reflections for refinement.  $R$ -factors based on  $F^2$  are statistically about twice as large as those based on  $F$ , and  $R$ -factors based on ALL data will be even larger.

*Fractional atomic coordinates and isotropic or equivalent isotropic displacement parameters ( $\text{\AA}^2$ )*

	$x$	$y$	$z$	$U_{\text{iso}}^*/U_{\text{eq}}$
C1	0.60327 (10)	1.16190 (10)	0.08398 (18)	0.0301 (6)
C2	0.66296 (9)	1.13668 (9)	0.09872 (19)	0.0295 (6)
H2	0.6864	1.1422	0.0358	0.035*
C3	0.69158 (10)	1.15740 (10)	0.1978 (2)	0.0326 (6)
C5	0.67499 (10)	1.06286 (10)	0.2282 (2)	0.0344 (6)
C6	0.65133 (9)	1.07395 (9)	0.11968 (18)	0.0288 (6)
H6	0.6690	1.0500	0.0660	0.035*
C7	0.58607 (9)	1.07054 (9)	0.11446 (18)	0.0276 (5)
C8	0.56310 (9)	1.10361 (10)	0.20743 (17)	0.0291 (6)
C9	0.57323 (9)	1.15729 (10)	0.18980 (18)	0.0285 (6)
C10	0.57402 (9)	1.11314 (11)	0.02405 (18)	0.0342 (6)
C11	0.72133 (10)	1.11804 (11)	0.3724 (2)	0.0432 (7)
H11A	0.7054	1.0897	0.4187	0.052*
H11B	0.7116	1.1546	0.4009	0.052*
C12	0.78385 (11)	1.11200 (10)	0.37121 (19)	0.0391 (7)
C13	0.82275 (11)	1.15206 (11)	0.3454 (2)	0.0485 (8)
H13	0.8140	1.1888	0.3269	0.058*
C14	0.87777 (12)	1.13051 (13)	0.3504 (2)	0.0617 (9)
H14	0.9094	1.1520	0.3355	0.074*
C15	0.88049 (12)	1.07617 (13)	0.3788 (2)	0.0573 (8)
H15	0.9137	1.0559	0.3857	0.069*
N4	0.69675 (8)	1.11223 (8)	0.26664 (16)	0.0321 (5)
O1	0.70632 (7)	1.20435 (7)	0.21805 (15)	0.0486 (5)
O2	0.67518 (8)	1.01900 (7)	0.27599 (16)	0.0550 (5)
S	0.81534 (3)	1.04915 (3)	0.40044 (6)	0.0562 (2)
Cl1	0.60119 (3)	1.22738 (3)	0.02283 (6)	0.0557 (2)
Cl2	0.55865 (3)	1.00296 (3)	0.09833 (6)	0.0508 (2)
Cl3	0.53529 (3)	1.07338 (3)	0.31710 (6)	0.0528 (2)
Cl4	0.56334 (3)	1.21203 (3)	0.27281 (6)	0.0553 (2)

## supplementary materials

---

C15	0.50195 (3)	1.12482 (3)	0.00103 (6)	0.0524 (2)
C16	0.60575 (3)	1.09588 (3)	-0.09771 (5)	0.0593 (2)

### Atomic displacement parameters ( $\text{\AA}^2$ )

	$U^{11}$	$U^{22}$	$U^{33}$	$U^{12}$	$U^{13}$	$U^{23}$
C1	0.0295 (13)	0.0306 (13)	0.0303 (14)	0.0027 (11)	0.0006 (11)	0.0069 (11)
C2	0.0227 (12)	0.0304 (13)	0.0353 (14)	-0.0024 (11)	0.0064 (11)	0.0025 (11)
C3	0.0210 (12)	0.0312 (14)	0.0456 (17)	-0.0027 (12)	0.0021 (12)	-0.0004 (13)
C5	0.0246 (13)	0.0282 (14)	0.0502 (17)	0.0013 (11)	-0.0019 (12)	0.0016 (13)
C6	0.0233 (12)	0.0267 (12)	0.0363 (15)	0.0006 (11)	0.0046 (11)	-0.0074 (11)
C7	0.0259 (12)	0.0271 (13)	0.0300 (14)	-0.0056 (11)	-0.0008 (11)	-0.0045 (11)
C8	0.0221 (12)	0.0384 (14)	0.0269 (14)	-0.0004 (12)	0.0030 (10)	0.0015 (12)
C9	0.0239 (12)	0.0318 (14)	0.0298 (14)	0.0080 (12)	0.0016 (11)	-0.0028 (11)
C10	0.0250 (13)	0.0519 (16)	0.0258 (13)	0.0007 (13)	-0.0012 (11)	-0.0058 (12)
C11	0.0458 (16)	0.0434 (16)	0.0404 (17)	0.0009 (14)	-0.0096 (14)	-0.0005 (13)
C12	0.0431 (16)	0.0383 (15)	0.0358 (16)	0.0025 (14)	-0.0143 (13)	0.0004 (13)
C13	0.0452 (17)	0.0378 (16)	0.062 (2)	-0.0073 (15)	-0.0266 (15)	0.0034 (14)
C14	0.0424 (18)	0.065 (2)	0.078 (2)	-0.0156 (18)	-0.0232 (16)	0.0116 (19)
C15	0.0419 (17)	0.067 (2)	0.064 (2)	0.0061 (17)	-0.0172 (15)	0.0063 (17)
N4	0.0287 (11)	0.0289 (11)	0.0388 (13)	-0.0024 (10)	-0.0077 (10)	0.0019 (10)
O1	0.0490 (11)	0.0291 (10)	0.0678 (14)	-0.0106 (9)	-0.0153 (10)	-0.0003 (9)
O2	0.0545 (12)	0.0307 (10)	0.0798 (16)	-0.0019 (10)	-0.0175 (11)	0.0179 (10)
S	0.0603 (5)	0.0458 (4)	0.0625 (5)	0.0053 (4)	-0.0086 (4)	0.0148 (4)
Cl1	0.0628 (5)	0.0437 (4)	0.0607 (5)	0.0027 (4)	-0.0044 (4)	0.0242 (4)
Cl2	0.0489 (4)	0.0382 (4)	0.0653 (5)	-0.0164 (3)	-0.0050 (4)	-0.0117 (3)
Cl3	0.0537 (4)	0.0620 (5)	0.0427 (4)	-0.0081 (4)	0.0166 (4)	0.0107 (4)
Cl4	0.0606 (5)	0.0437 (4)	0.0617 (5)	0.0095 (4)	0.0148 (4)	-0.0194 (4)
Cl5	0.0325 (3)	0.0753 (5)	0.0494 (4)	-0.0002 (4)	-0.0142 (3)	0.0020 (4)
Cl6	0.0611 (5)	0.0861 (6)	0.0308 (4)	-0.0023 (5)	0.0084 (4)	-0.0126 (4)

### Geometric parameters ( $\text{\AA}$ , $^\circ$ )

C1—C9	1.519 (3)	C8—C9	1.320 (3)
C1—C10	1.551 (3)	C8—Cl3	1.695 (2)
C1—C2	1.554 (3)	C9—Cl4	1.689 (2)
C1—Cl1	1.741 (2)	C10—Cl6	1.761 (2)
C2—C3	1.508 (3)	C10—Cl5	1.763 (2)
C2—C6	1.542 (3)	C11—N4	1.464 (3)
C2—H2	0.9800	C11—C12	1.496 (3)
C3—O1	1.199 (3)	C11—H11A	0.9700
C3—N4	1.388 (3)	C11—H11B	0.9700
C5—O2	1.206 (3)	C12—C13	1.369 (3)
C5—N4	1.374 (3)	C12—S	1.714 (3)
C5—C6	1.504 (3)	C13—C14	1.409 (4)
C6—C7	1.558 (3)	C13—H13	0.9300
C6—H6	0.9800	C14—C15	1.344 (4)
C7—C8	1.516 (3)	C14—H14	0.9300
C7—C10	1.554 (3)	C15—S	1.701 (3)

C7—C12	1.749 (2)	C15—H15	0.9300
C9—C1—C10	99.40 (18)	C7—C8—C13	123.56 (17)
C9—C1—C2	107.31 (18)	C8—C9—C1	107.72 (19)
C10—C1—C2	100.37 (18)	C8—C9—C14	128.13 (19)
C9—C1—C11	116.18 (16)	C1—C9—C14	123.74 (18)
C10—C1—C11	116.20 (16)	C1—C10—C7	92.72 (17)
C2—C1—C11	115.16 (16)	C1—C10—C16	114.06 (17)
C3—C2—C6	104.81 (19)	C7—C10—C16	114.17 (17)
C3—C2—C1	112.73 (19)	C1—C10—C15	113.56 (17)
C6—C2—C1	103.33 (17)	C7—C10—C15	113.82 (16)
C3—C2—H2	111.8	C16—C10—C15	108.10 (12)
C6—C2—H2	111.8	N4—C11—C12	112.3 (2)
C1—C2—H2	111.8	N4—C11—H11A	109.1
O1—C3—N4	124.3 (2)	C12—C11—H11A	109.1
O1—C3—C2	127.9 (2)	N4—C11—H11B	109.1
N4—C3—C2	107.8 (2)	C12—C11—H11B	109.1
O2—C5—N4	124.2 (2)	H11A—C11—H11B	107.9
O2—C5—C6	127.5 (2)	C13—C12—C11	127.5 (2)
N4—C5—C6	108.2 (2)	C13—C12—S	111.32 (19)
C5—C6—C2	105.01 (19)	C11—C12—S	121.1 (2)
C5—C6—C7	113.76 (19)	C12—C13—C14	111.4 (2)
C2—C6—C7	102.84 (18)	C12—C13—H13	124.3
C5—C6—H6	111.6	C14—C13—H13	124.3
C2—C6—H6	111.6	C15—C14—C13	114.0 (3)
C7—C6—H6	111.6	C15—C14—H14	123.0
C8—C7—C10	99.38 (18)	C13—C14—H14	123.0
C8—C7—C6	107.48 (18)	C14—C15—S	111.3 (2)
C10—C7—C6	100.44 (17)	C14—C15—H15	124.4
C8—C7—C12	115.70 (16)	S—C15—H15	124.4
C10—C7—C12	116.52 (16)	C5—N4—C3	114.1 (2)
C6—C7—C12	115.18 (16)	C5—N4—C11	123.7 (2)
C9—C8—C7	107.86 (19)	C3—N4—C11	122.2 (2)
C9—C8—C13	128.35 (19)	C15—S—C12	91.96 (14)

Hydrogen-bond geometry ( $\text{\AA}$ ,  $^\circ$ )

$D-H\cdots A$	$D-H$	$H\cdots A$	$D\cdots A$	$D-H\cdots A$
C2—H2 $\cdots$ O2 <sup>i</sup>	0.98	2.54	3.064 (3)	113.
C6—H6 $\cdots$ O2 <sup>i</sup>	0.98	2.51	3.042 (3)	114.

Symmetry codes: (i)  $y-1/4, -x+7/4, z-1/4$ .

Fig. 1

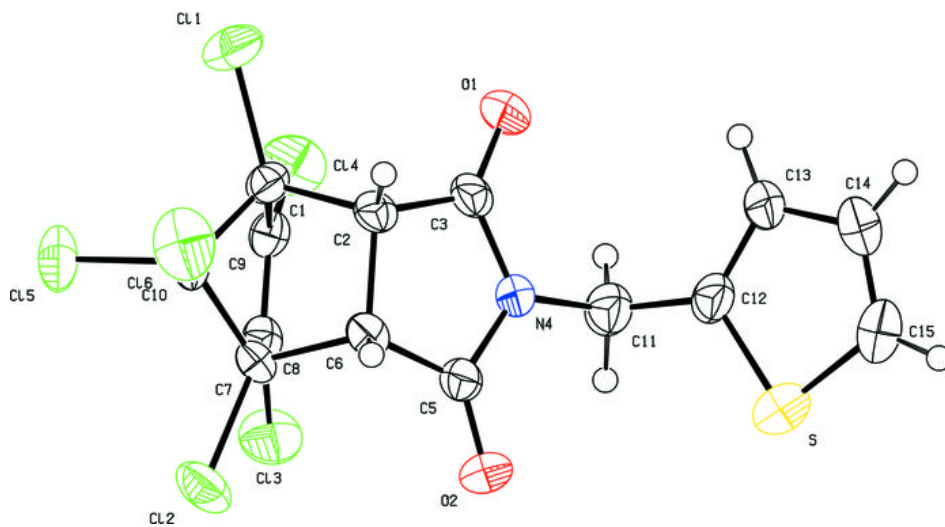




Fig. 2

